



Achieving
the Dream™

Florida College System Student Success Center

Environmental Scan

June 2018



Today's Speakers from Achieving the Dream



Laurie Heacock
Vice President of Data,
Technology and Analytics



Meredith Archer Hatch
Senior Associate Director
for Workforce and
Academic Alignment



Susan Mayer
Chief Learning Officer

Achieving the Dream

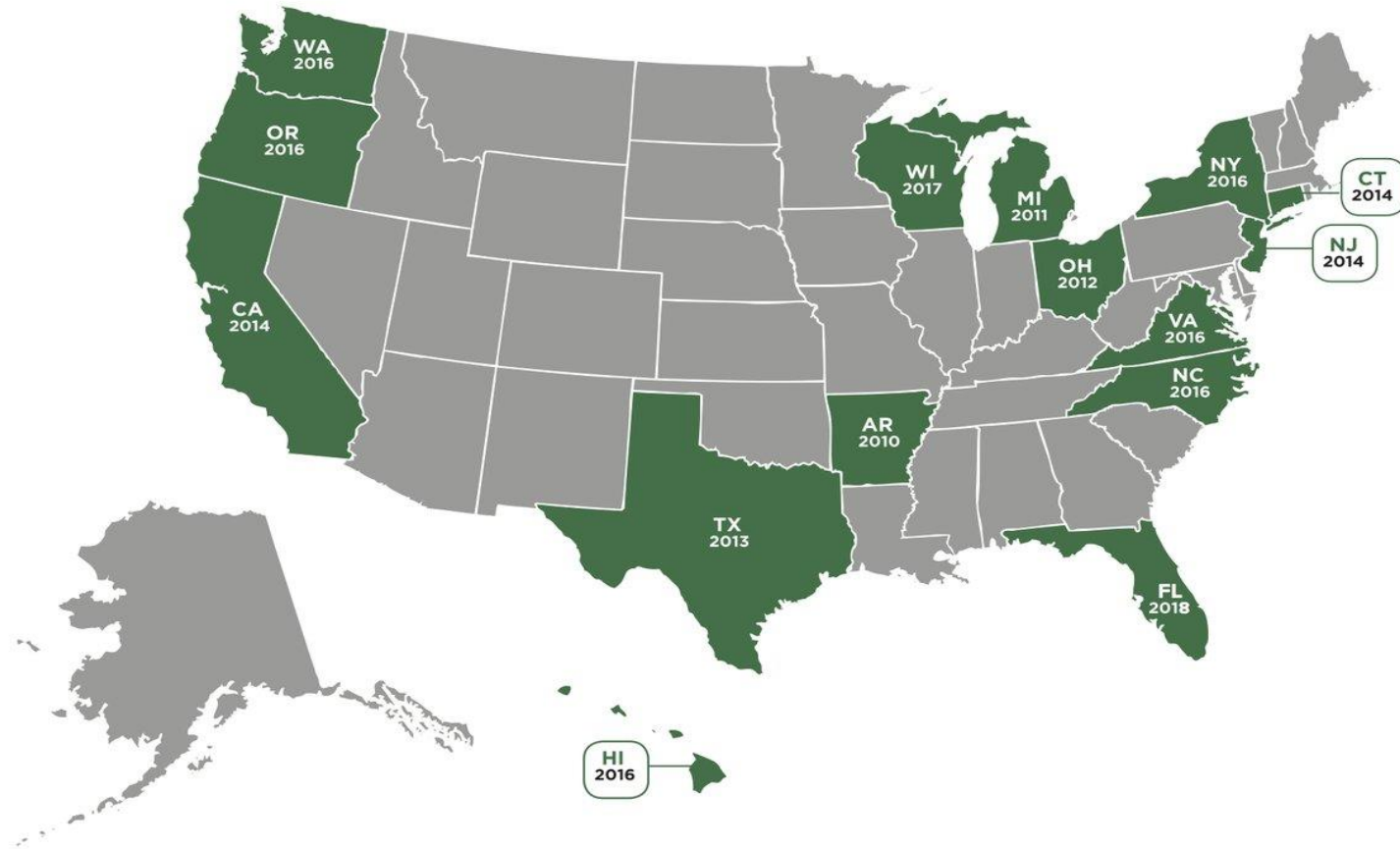
Leads growing network of over 220 community colleges across the U.S. committed to helping their students achieve academic success, personal growth and economic opportunity through educational equity

- approximately one-third of the Florida College System colleges participate

Closing achievement gaps and accelerating student success through a change process that builds institutional capacities in seven essential areas.

Together with more than 75 coaches and advisors, supports more than 4 million community college students

ATD Supports Student Success Centers to Implement Guided Pathways



<https://www.jff.org/what-we-do/impact-stories/student-success-center-network/>

Guided Pathways: Intentional, Structured Experiences that Improve Student Outcomes



Four Pillars of Guided Pathways



Create clear curricular pathways to employment and further education.

CLARIFY



Help students choose and enter their pathway.

INTAKE



Help students stay on their path.

SUPPORT



Ensure that learning is happening with intentional outcomes.

LEARNING

Today's Objectives

- Share high-level findings of Environmental Scan
 - Publicly available sources
 - Not college-specific
- Identify areas for further progress in improving student outcomes
- Suggest potential next steps for Student Success Center implementation

Environmental Scan Scope

Using a Pathways lens to map student success initiatives

| Theme/ Location | Leadership and Data | Access | Affordability | Guided Pathways Pillars | Credential Completion |
|----------------------------|--------------------------------|---------------|----------------------|--|----------------------------------|
| Institutional | | | | | |
| State-wide | | | | | |
| National | | | | | |

Environmental Scan Approach

At the Florida College System's request, conducted

- **content review** of documents provided by the Florida College System
- **phone calls** with key Florida College System staff
- **public website scans** for additional information

Given the indirect data collection method, information may not be exhaustive of all ongoing efforts; however, the scan will serve as a living documents for colleges to update

Florida Colleges Making Progress Implementing Pathways at Scale

Key examples:

- Supporting **on-boarding and first year** for FTIC students
- **Mapping academic programs** to meta-major career areas
- **Redesigning gateway** courses
- Providing **career advising and coaching**
- Offering range of **academic supports**
- Identifying **achievement gaps** and monitoring **student success metrics**
- Providing **financial supports for completion**
- **Auto-graduating** students

Opportunities and Recommendations

Opportunities for Additional Support and Outcomes Improvement

- **Inclusion** of more adult learners, part-time students, students who persist but don't earn credentials, and students who stop/drop out
- Building consensus on **common language/definitions**, especially in advising
- **Integrating** academic and holistic supports and **aligning** with pathways
- **Identifying and scaling** most successful strategies and practices
- **Learning** from each other

CLARIFY: Clarify Paths to Student End Goals

Current:

- Mapping and sequencing courses for full-time students
- Mapping stackable AS and AAS programs

Opportunities:

- Part-time student maps
- Mapping to labor market outcomes
- Mapping stackable AA programs
- Course scheduling for completion
- Contextualized courses
- Alignment between academic programs and Prior Learning Assessment (PLA), Competency Based Education (CBE), and non-credit to credit pathways

INTAKE: Help Students Choose and Enter a Pathway

Current:

- Meta-major orientations, first year advising, FYE courses for FTIC students, especially direct entry from high school
- Early momentum metrics

Opportunities:

- Intentional on-boarding for all students
- Career exploration at/before enrollment; partnerships with K-12
- Personalized career/educational plans
- Tighter linking of first year advising and 1st year experience
- Holistic support (financial/food/housing security, financial planning)

SUPPORT: Help Students Stay on a Path

Current:

- Career coaching/ advising
- Early alert and intervention systems
- Academic and student services collaboration
- Noncognitive supports
- Academic supports

Opportunities:

- Holistic, integrated advising models aligned with pathways
- Equitable supports for all students based on segmentation and analytics
- Expanded collaboration/partnerships between academic and student services
- Progression metrics
- Increased information sharing

LEARN: Ensure That Students are Learning

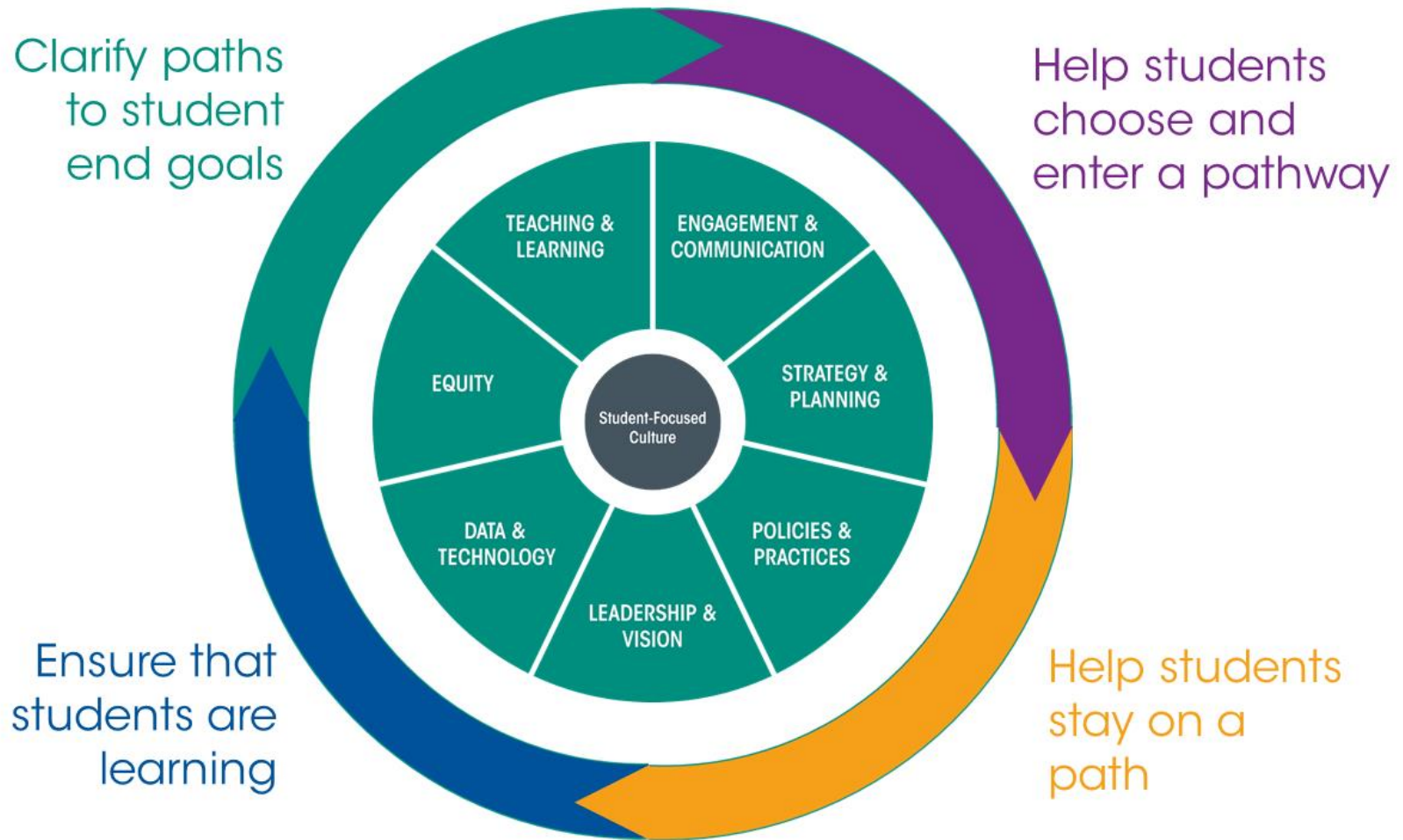
Current:

- Course learning outcomes
- Full-time faculty professional development

Opportunities:

- Centers for Teaching and Learning
- Programmatic learning outcomes for skills/talent development
- Co-curricular alignment with student learning outcomes
- All faculty professional development
- Faculty professional development pathways
- Course redesign to include innovation in pedagogy, instructional strategy, technology

Institutional Capacity Framework Supports Pathways



Future Considerations/Next Steps

- Primary data collection to **explore gaps, identify college needs, assess capacities**
- **Strategic Planning** for Florida's Student Success Center
 - Goals, priorities and outcomes
 - Targeted curriculum
 - Collaborative learning/mentoring partnerships
- Working with and **learning** from other Student Success Centers

Questions and Answers

Florida Colleges in ATD Network

Past

Hillsborough CC
Pensacola State
College

Present

Broward College
Florida State College
at Jacksonville
Indian River State College
Miami Dade College
St. Petersburg College
Tallahassee Community College
Valencia College

2018 Cohort

Palm Beach State College